

Worktops, splashbacks  
and upstands exclusively  
manufactured by

**BB**  
**BUSHBOARD**



prima

classic design

# a passion for worksurfaces

At Bushboard, we're passionate about our worksurfaces. And we want you to feel great about the one you choose for your home. Our Prima range gives you the very best in design, because we invest so much time in developing a palette that suits everyday living.

There are more than 50 designs to inspire you and then leave you with that special feeling of a choice well made, long after your worksurface has been installed. We're very particular about the high print definition that makes Prima designs look so realistic, faithfully replicating stones, woodgrains, granites and other materials. Add to that the superb choice of surface textures and you begin to appreciate just how elegant your Prima worksurface can be.

They're incredibly adaptable too, with a choice of 3m and 4.1m sizes, as well as integrated solutions for worksurfaces, upstands and splashbacks. Every worksurface we make also has an unrivalled reputation for durability, performance and easy maintenance. So you can be sure your Prima worksurface will not just look great, but will also last extremely well.

Front cover:  
Natural Block Walnut  
worksurface



Olympus Glastex Gloss  
worksurface and upstand

Espresso Riverwash



# feel the beauty

Feel the beauty of Riverwash.

Warm to the touch and sophisticated on the eye.

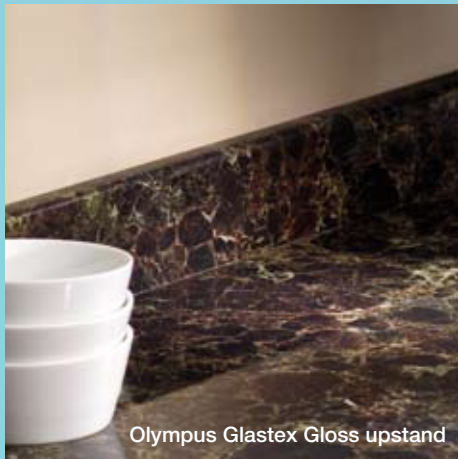
Innovative to a tee, the unique Riverwash texture enhances the beautifully subtle designs to create a stunning 3D effect. Just as hardwearing. Just as easy to maintain. Just more visually engaging.



Zebrano Blocked  
worksurface and upstand

# the best of both worlds

Prima excels in woodgrains. They capture natural-looking beauty through superb depth of colour and high print definition. From the exotic tones of Zebrano to the mellow hues of Cherry, they offer the best of both worlds — fabulous natural beauty with hygienic easy to maintain quality.



Olympus Glastex Gloss upstand

Why not go for an integrated design look?

Prima offers total design flexibility with an excellent range of accessories. Take laminate splashbacks. Compared to tiling, they're not only easy to fit but simple to look after. Or the extensive choice in upstands, simple, stylish and contemporary. A smart finishing detail between your worksurface and wall.

# finish the look

Brushed Aluminium  
splashback and Black  
Granite Riverwash  
worksurface



# a smart choice

Prima worksurfaces are available in a variety of lengths and widths. We've developed this flexibility so you can use worksurfaces more smartly, while also being more eco-friendly.

Save on material. Save on waste.



Amber Kashmir  
worksurface and upstand



Design	Texture	3600 X 600mm 3600 x 665mm breakfast bar 3600 x 900mm breakfast bar		3000 X 600mm 4100 X 600mm 4100 X 665mm breakfast bar 4100 X 900mm breakfast bar		3000 x 600 x 8mm midway 1500 x 1200 x 8mm hob panel		3000 x 100 x 20mm upstand		3000 X 600mm 3000 X 900mm breakfast bar	
		40mm	40mm	splashback	upstand	30mm					
NEW Riverwash											
6256	<b>Berne Stone</b>	Riverwash	• • •					•			
2699	<b>Black Granite</b>	Riverwash	• • •					•			
6219	<b>Espresso</b>	Riverwash	• • •					•			
6218	<b>Latte</b>	Riverwash	• • •					•			
6220	<b>Smoke</b>	Riverwash	• • •					•			
6225	<b>Snow</b>	Riverwash	• • •					•			
Glastex Gloss											
6227	<b>Amber Kashmir</b>	Glastex Gloss	• • •					•			
2699	<b>Black Granite</b>	Glastex Gloss	• • •			• •		•			
7178	<b>Black Quasar</b>	Glastex Gloss	• • •			• •		•			
1673	<b>Blue Magma</b>	Glastex Gloss	• • •			• •		•			
6242	<b>Italian Marble</b>	Glastex Gloss	• • •					•			
6506	<b>Madrid Jade</b>	Glastex Gloss	• • •			• •		•			
6257	<b>Olympus</b>	Glastex Gloss	• • •			• •		•			
3774	<b>Terracotta Granite</b>	Glastex Gloss	• • •			• •		•			
0331	<b>Toscana</b>	Glastex Gloss	• • •					•			
Crystal & Universal											
2381	<b>Amber Granite</b>	Crystal		• • • •							
6227	<b>Amber Kashmir</b>	Crystal		• • • •				•			
4612	<b>Amber Slate</b>	Universal		• • • •							
4615	<b>Beech Butcher Block</b>	Universal		• • • •				•		• •	
2699	<b>Black Granite</b>	Crystal		• • • •		•		•		• •	
7178	<b>Black Quasar</b>	Crystal		• • • •		•		•			
2935	<b>Blue Carpathia</b>	Crystal		• • • •							
1673	<b>Blue Magma</b>	Crystal		• • • •		•		•			
1793	<b>Champagne Haze</b>	Crystal		• • • •						• •	
3812	<b>Cherry Butcher Block</b>	Universal		• • • •							
5850	<b>Classic Onyx</b>	Universal		• • • •						• •	
3855	<b>Clear Maple</b>	Universal		• • • •							
4536	<b>Cornish Granite</b>	Crystal		• • • •		• •		•		• •	
2510	<b>Golden Morning Oak</b>	Universal		• • • •						• •	
4874	<b>Granite Black Brown</b>	Crystal		• • • •				•			
4717	<b>Green Lake</b>	Crystal		• • • •							
4610	<b>Green Laliue</b>	Crystal		• • • •							
0332	<b>Himalaya</b>	Universal		• • • •							
1936	<b>Lava Dust</b>	Crystal		• • • •						• •	
6506	<b>Madrid Jade</b>	Crystal		• • • •		• •		•			
2851	<b>Malachite Carpathia</b>	Crystal		• • • •						• •	
4120	<b>Millstar Cream</b>	Universal		• • • •							
4121	<b>Millstar Grey</b>	Universal		• • • •							
0330	<b>Monseratt</b>	Crystal		• • • •							
2726	<b>Natural Beech</b>	Universal		• • • •						• •	
0215	<b>Natural Block Walnut</b>	Universal		• • • •		• •		•			
6257	<b>Olympus</b>	Crystal		• • • •		• •		•			
2843	<b>Paradise Granite</b>	Crystal		• • • •							
3522	<b>Perlato Granite</b>	Crystal		• • • •							
1340	<b>Polar White</b>	Crystal		• • • •				•		• •	
2743	<b>Sandgrain</b>	Crystal		• • • •				•			
6233	<b>Soft Walnut Blocked</b>	Universal		• • • •				•			
2748	<b>Sparkle Glass</b>	Crystal		• • • •							
1782	<b>Stardust</b>	Crystal		• • • •						• •	
0331	<b>Toscana</b>	Crystal		• • • •		• •		•			
5726	<b>Utopia Granite</b>	Crystal		• • • •		• •		•			
1790	<b>Warm Haze</b>	Crystal		• • • •						• •	
6228	<b>Wenge Blocked</b>	Universal		• • • •		• •		•			
0333	<b>Woodmix</b>	Universal		• • • •				•			
6235	<b>Zebrano Blocked</b>	Universal		• • • •		• •		•			
Metallic splashbacks											
8071	<b>Brushed Aluminium</b>	Metal				• •					
3985	<b>Brushed Silver</b>	Matt				• •					

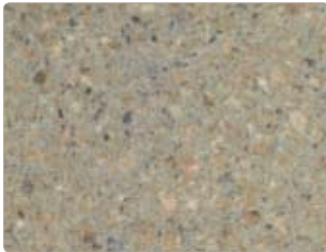
All worksurfaces come with a full length edging strip and care leaflet.



**Snow** riverwash W U



**Latte** riverwash W U



**Berne Stone** riverwash W U



**Smoke** riverwash W U



**Espresso** riverwash W U



**Black Granite** riverwash W U



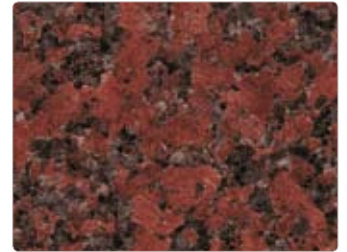
**Italian Marble** glastex gloss W U



**Amber Kashmir** glastex gloss W U



**Toscana** glastex gloss W U



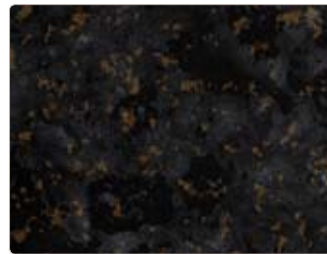
**Terracotta Granite** glastex gloss W U S



**Madrid Jade** glastex gloss W U S



**Olympus** glastex gloss W U S



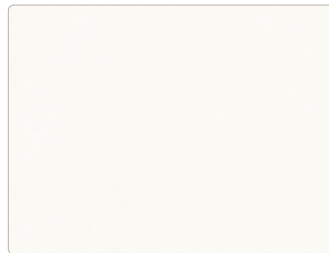
**Black Quasar** glastex gloss W U S



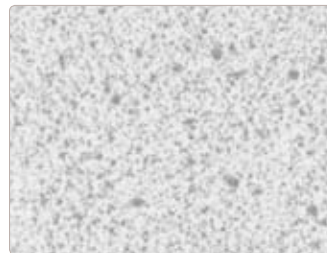
**Black Granite** glastex gloss W U S



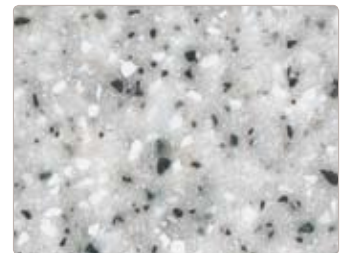
**Blue Magma** glastex gloss W U S



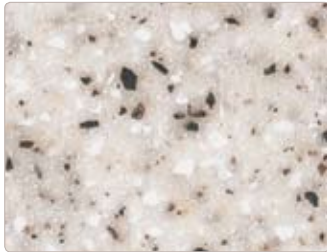
**Polar White** crystal W U



**Lava Dust** crystal W



**Millstar Grey** universal W



**Millstar Cream** universal W



**Champagne Haze** crystal W



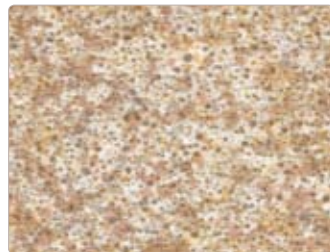
**Classic Onyx** universal W



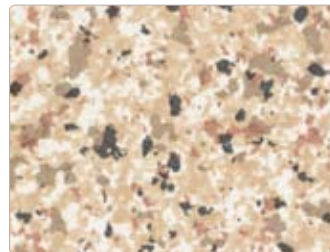
**Sandgrain** crystal W U



**Himalaya** universal W



**Warm Haze** crystal W



**Amber Granite** crystal W



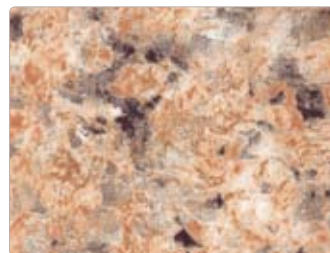
**Cornish Granite** crystal W U S



**Amber Kashmir** crystal W U



**Paradise Granite** crystal W



**Utopia Granite** crystal W U S



**Toscana** crystal W U S



**Madrid Jade** crystal W U S



**Green Laliq** crystal W



**Malachite Carpathia** crystal W



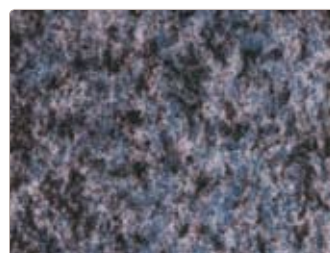
**Green Lake** crystal W



**Monseratt** crystal W



**Sparkle Glass** crystal W

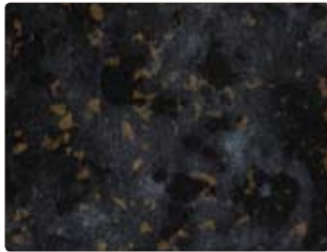


**Blue Carpathia** crystal W



**Blue Magma** crystal W U S

**BB**  
**BUSHBOARD**



**Black Quasar** crystal W U S



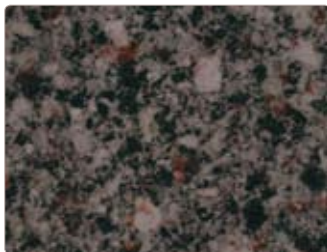
**Black Granite** crystal W U S



**Amber Slate** universal W



**Perlato Granite** crystal W



**Granite Black Brown** crystal W U



**Olympus** crystal W U S



**Stardust** crystal W



**Clear Maple** universal W



**Natural Beech** universal W



**Beech Butcher Block** universal W U



**Woodmix** universal W U



**Natural Block Walnut** crystal W U S



**Golden Morning Oak** universal W



**Zebrano Blocked** universal W U S



**Cherry Butcher Block** universal W



**Soft Walnut Blocked** universal W U



**Wenge Blocked** universal W U S



**Brushed Aluminium** Metal S



**Brushed Silver** Matt S

W = worksurface  
U = upstand  
S = splashback

# made to last

## Quality

Manufacturing with the finest materials is what gives Bushboard worksurfaces their signature quality compared to competitive products. While beautiful and stylish to look at, they are also constructed to cope with the wear and tear of everyday living.

Independently tested to BS/EN438, your Bushboard worksurface is designed to withstand knocks, abrasions, chemicals, cigarette burns, steam, stains from juice, tea, wine or coffee. It is also highly resistant to heat, although we recommend the use of a protective pad as saucepan bottoms can become extremely hot.

Bushboard select E1 grade high-density particleboard for strength and stability. Its homogenous construction generates excellent machining capability for sink cutouts and mitre joints. They are surfaced in Formica® high-pressure laminate. A resin impregnated moisture resistant barrier combines with Bushboard's unique 'Tekseal' cast resin to completely seal the underside against moisture penetration from everyday spills.

## Gloss texture

Gloss texture needs a little more care and attention than our Riverwash, Crystal and Universal textures. The Glastex Gloss technology offers an advanced level of protection against scuffing, but don't forget this is a fashionable finish that can mark and scratch more easily with everyday use. To maintain its lovely high gloss look, you should also buff up the surface to a shine after normal wiping down.

## Lifetime Guarantee

Bushboard worksurfaces (except gloss) are guaranteed for their lifetime. Bushboard will make good by repair and/or replacement (at its discretion) any Prima product of its manufacture which can be shown to have failed by reason of defects in its manufacture, that is subject to wear and tear, provided the product has been installed and used in accordance with the manufacturer's instructions and that the products are used for their intended purpose / application. Proof of date and place of purchase required. This guarantee is in addition to your statutory rights as a consumer and does not affect your rights in any way.

## Care & Maintenance

Bushboard worksurfaces are so easy to maintain. Unlike other worksurface materials such as timber, composites or granites, they require no regular maintenance or repair. All you need to do is wipe them with a moist cloth and your favourite mild detergent. For more stubborn marks such as fruit juice or coffee, leave the detergent to soak on the surface for a little while before rinsing thoroughly. Obviously, your worksurface can become damaged if mistreated, so we recommend some sensible measures like placing hot pans or casserole dishes on protective mats and mopping up spills quickly. Full details can be found in our care & maintenance leaflet. One of these is included with every worktop purchased but if you need a copy please call our Customer Service Team or log onto our website.

## Profiles

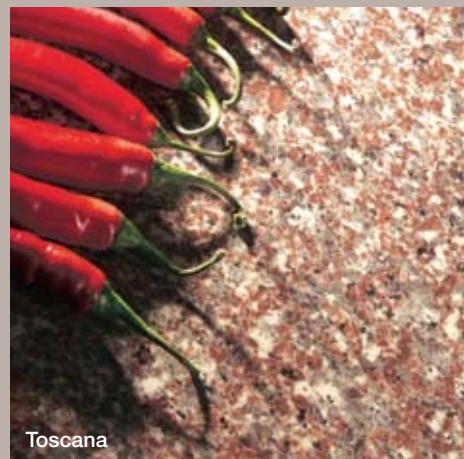
Worktops are profiled along one long edge. Breakfast bars are profiled along two long edges.

40mm

30mm

splashback

upstand



# made by Bushboard



Bushboard is the UK's largest independent manufacturer of worksurfaces. With a manufacturing history dating from the 1930's and more than 20 years experience in the production of premium worksurfaces, we are confident about the quality and the style statement our worksurfaces can make to your home. Continual investment, combined with real passion for our business, means we use the latest technologies and manufacturing techniques to keep our products at the forefront of our industry. So confident are we about their superior quality, that every Prima worksurface produced by us carries a lifetime guarantee.

We have an exemplary record in health and safety. Over the last two decades we have received consistent recognition from the industry-recognised RoSPA (Royal Society for the Prevention of Accidents) and BSC (British Safety Council), gaining many awards in the process.

We also take our environmental responsibilities very seriously. In the kitchen industry, we are proactive in encouraging smarter use of 3m and 4.1m worksurfaces to try and reduce over-specification of product when shorter lengths will do the job. It means less off-cuts and waste having to go to landfill. In the last 12 months alone continued investment in process technology has reduced our waste by 500 tonnes and we continue to look at ways to reduce it even further – the most recent being a system to bale all our paper, cardboard and plastic for recycling.

As a large consumer of chipboard, we ensure that all our material carries the PEFC or FSC certification, guaranteeing that it comes from properly environmentally managed and sustainable sources. Not content, we are seeking independent accreditation to provide surety for 'chain of custody'.

Italian Marble  
Glastex Gloss



# free sample service

Back cover:  
**Berne Stone  
Riverwash**

Prima worksurfaces will add style and elegance to your kitchen. To help you with your choice, we have a dedicated Customer Service Team to give you all the friendly help and advice you need.

We can send you A6 samples of the designs you are considering. We also offer advice on installing and looking after your Prima worksurfaces, and our care & maintenance leaflet is available by post, email or on our website.

The entire Prima range is on display at over 2,500 kitchen retailers nationwide and visiting one of them is often the best way to make your final decision. The team can advise which retailers are nearest to you.

All samples are available free of charge by contacting:

tel: 01933 232 242

fax: 01933 232 286

email: [samples@bushboard.co.uk](mailto:samples@bushboard.co.uk)

[www.bushboard.co.uk](http://www.bushboard.co.uk)

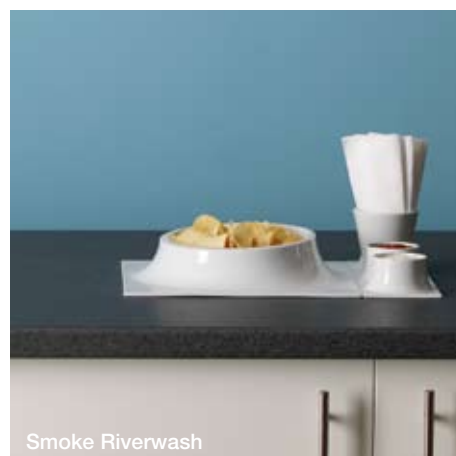
Bushboard Ltd  
9-29 Rixon Road  
Wellingborough Northants NN8 4BA

The company reserves the right to change specifications at any time, without notice. Every effort has been made to achieve faithful representations of our products in this brochure, but due to printing limitations we recommend that samples of actual material are requested before purchasing.

Formica and the Formica Logo, Prima and Formica Prima are registered trade marks of The Formica Corporation. Made by Bushboard Limited in the United Kingdom under licence from Formica Limited. Glastex®, Splashback by Bushboard® are registered trademarks of Bushboard Limited.



Cherry Butcher Block



Smoke Riverwash



BB  
BUSHBOARD